



Pacific Institute *for the* Mathematical Sciences

PIMS CONNECTION

MONTHLY NEWSLETTER | June 2018



Greetings from PIMS

Welcome to a June filled with PIMS sponsored and organized events across the country. It's a busy time of year!

The [2018 bcdata Science Workshop](#) is underway at PIMS Central Office (UBC), with projects ranging from [mining](#) to [connecting genetic mutations](#). Later this month, the [2018 PIMS Datathon](#) will be hosted in Calgary, following the [15th International Conference on Quantum Physics and Logic](#) at Dalhousie University, the [2018 Canadian Mathematics Education Study Group](#) at Quest University, the [Prairie Discrete Math Workshop](#) at Brandon University and the [Joint Canada-Asia Pacific Conference on General Relativity and Relativistic Astrophysics](#) at the University of Alberta, just to name a few.

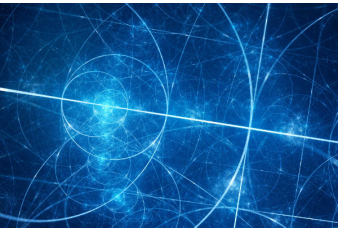
All this and more coming in June! Check it all out below.

Sincerely,
The PIMS Team

FEATURE EVENTS



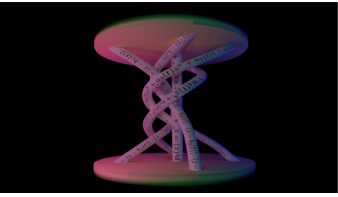
[2018 PIMS bcdata Science Workshop](#)
June 4-8 at UBC



[Séminaire de Mathématiques Supérieures](#)

June 4-15 at the Fields Institute

Lectures will focus on the following topics: higher categorical structures in geometry, derived geometry, their application in geometry and physics, as well as factorization algebras.



[2018 Summer School on Geometry and Topology](#)

June 11-15 at the University of Chicago

The third in a series of NSF funded summer schools in geometry and topology



[34th Conference on the Mathematical Foundations of Programming Statistics \(MFPS 2018\)](#)

June 6-9 at Dalhousie University

MFPS conferences are dedicated to the areas of mathematics, logic, and computer science that are related to models of computation in general, and to semantics of programming languages in particular.

ALL PIMS EVENTS | April 2018

Scientific

Educational

Industrial

NEWS & ANNOUNCEMENTS



[The Power of Relationship Building for Indigenous Student Success](#)

PIMS UManitoba Education Coordinator Darja Barr writes on efforts to **bring mathematics to Indigenous students**. At the University of Manitoba, one of the Five Strategic Priorities that are laid out in our strategic plan is ***Creating Pathways for Indigenous Achievement***.

Solving Workshop
Dalhousie University
July 3 to 6, 2018

partners and problems

the Black Arcs EthEye FORCE
QRA stepscan TECHNOLOGIES INC.

DALHOUSIE UNIVERSITY
Mitacs
NSERC CRSG
pims
Springboard

financial support available
aarms.math.ca/ipsw2018

[PIMS Sponsors AARMS Industrial Problem Solving Workshop at Dalhousie University](#)

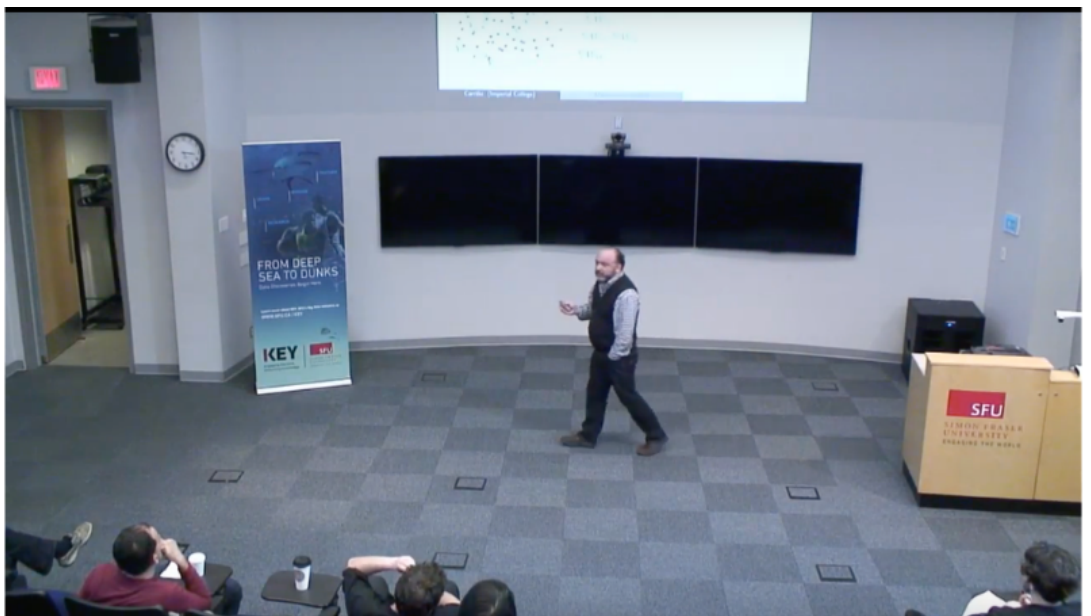
PIMS is excited to sponsor the upcoming [AARMS Industrial Problem Solving Workshop \(IPSW\)](#), to be held at Dalhousie from **July 3 to 6, 2018**. During this workshop, faculty and postdocs will work collaboratively with graduate and undergraduate students on industrial problems posed by Atlantic Canadian companies.



[PIMS Celebrates Record-Breaking 20th Annual ELMACON](#)

With a **record-breaking attendance of 320 participants**, this year's competition — the **20th annual ELMACON** — held on April 28 at UBC, did not disappoint.

MEDIA



[Jose Carrillo](#) | [Repulsive-attractive models in collective behaviour and applications](#)
Friday, April 6, 2018 - PIMS, Simon Fraser University
PIMS/CSC Distinguished Speaker

For more lectures and PIMS resources, please visit mathtube.org

PIMS COMMUNITY RECENT PUBLICATIONS

2. Scully, S., "[The Artin-Springer theorem for quadratic forms over semi-local rings with finite residue fields](#)," Proceedings of the American Mathematical Society, 146, 2018
3. Kulkarni A., Maxedon G., and Yeats K., "[Some results on an algebro-geometric condition on graphs](#)," Journal of the Australian Mathematical Society, Vol. 104, 2018
4. Courtiel J., Fusy E., Lepoutre M., and Mishna, M., "[Bijections for Weyl Chamber walks ending on an axis, using arc diagrams](#)," European Journal of Combinatorics, Vol. 69, 2018

ABOUT PIMS

The Pacific Institute for the Mathematical Sciences (PIMS) was created in 1996 to promote **discovery, understanding** and **awareness** in the mathematical sciences. PIMS has expanded from the mathematics community of **Alberta** and **British Columbia** to include **Washington State, Saskatchewan** and **Manitoba**. We are proponents of mathematical **collaboration with industry, innovation in mathematics education** from K-12 to graduate level initiatives, **public outreach** and **partnerships** with similar organizations around the globe. We fund Collaborative Research Groups, Post-Doctoral Fellowships, individual events, and competitive prizes in mathematics.

FOLLOW US!



Mailing address:

Pacific Institute for the Mathematical Sciences
The University of British Columbia
4176-2207 Main Mall
Vancouver, BC V6T 1Z4
Canada

[unsubscribe from this list](#) [update subscription preferences](#)