



NEWSLETTER | November 2017



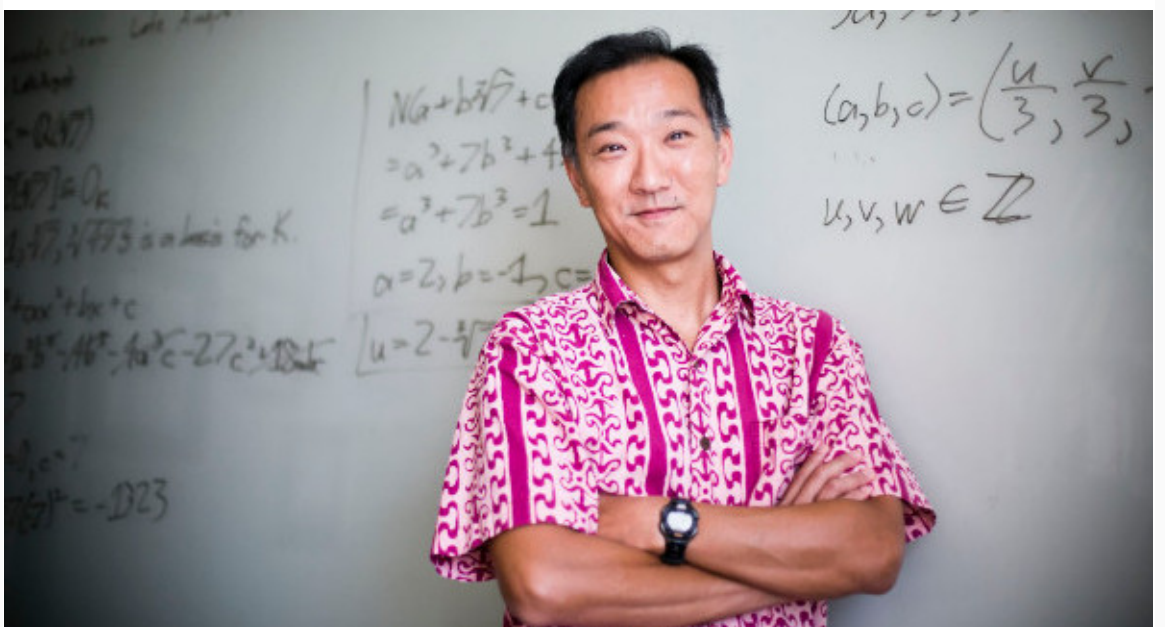
GREETINGS FROM PIMS

October ended on a high note for our Education initiatives as UBC PIMS Education Coordinator Melania Alvarez gave a [distinguished lecture at UManitoba](#) followed by two workshops on the programs and initiatives in the [PIMS Education outreach toolbox](#). These programs are in full swing with [Math Circles](#) and [Math Mania](#) events running throughout November. On the Industrial side, we are looking forward to the [PIMS-bcdata Colloquium Series kicking off with Eldad Haber](#) on November 15 at Mobify downtown, as well as our upcoming [Alberta Epigenetics Workshop](#) which will bring together experts from UAlberta, UCalgary, ULethbridge, and AHS to discuss research and partnerships in Computational Biology, Bioinformatics and Artificial Intelligence.

We've got over 20 events planned around the sites this November. Check it all out below and feel free to give us feedback [here](#) on the new PIMS Connection layout.

Sincerely,
The PIMS Gang

FEATURE EVENTS



In April 2014, Ken Ono announced that he and two others had found a framework for the Rogers–Ramanujan identities and their arithmetic properties, solving a long-standing mystery stemming from the work of Ramanujan. The findings yield a treasure trove of algebraic numbers and formulas to access them. Ono's co-authors for this work were S. Ole Warnaar of the University of Queensland and Michael Griffin, an Emory University graduate student. Their work made world news that year and was ranked 15th among the top 100 stories of 2014 in science in *Discover* magazine.

He is currently the Asa Griggs Candler Professor of Mathematics at Emory University.



[PIMS-bcdata Colloquium Series: Eldad Haber](#)

November 15, 6:00pm at Mobify, Vancouver

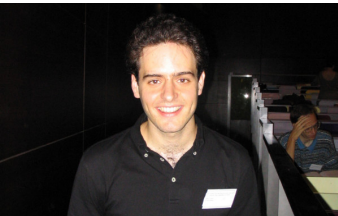
Deep Neural Networks Meet Partial Differential Equations



[PIMS-UBC Math Distinguished Colloquium: Yaniv Plan](#)

November 17, 3:00pm at UBC

Talk is part of the PIMS-UBC Math Sciences Prize



[PIMS-UBC Math Distinguished Colloquium: Marco Cuturi](#)

November 29, 5:00pm at UBC

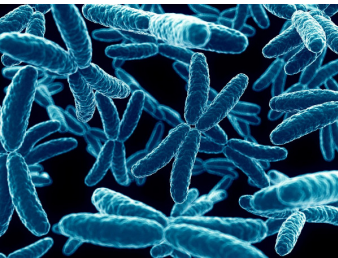
Generative Models and Optimal Transport



[PIMS-UManitoba Distinguished Lecture: Anthony Bonato](#)

November 30, 4:00pm at UManitoba

Graph Searching Games and Probabilistic Methods



[Alberta Epigenetics Workshop 2017](#)

November 24 at UCalgary

Covering current trends, expertise, resources, and challenges in Computational Biology, Bioinformatics, and AI.

ALL PIMS EVENTS | NOVEMBER 2017

Scientific

Educational

Industrial

NEWS & ANNOUNCEMENTS



[PIMS Announces Funding for Five Canadian Students to Attend a 2018 IPSW in France](#)

A group of French mathematicians are organizing a "Semaine d'Étude Maths-Entreprises" that will take place in Lille, France on **January 29-February 2, 2018**.



[Michael Lamoureux Recognized as a 2017 Peak Scholar](#)

We are proud to announce that **PIMS Innovation Coordinator, Professor Michael Lamoureux** has been recognized as a **2017 Peak Scholar** in Entrepreneurship, Innovation, and Knowledge Engagement.



[45,000 and Counting: The PIMS Education Legacy](#)

Math is everywhere; for everyone. And it is unavoidable. See all that we've accomplished in 20 years of PIMS for mathematics education outreach across Western Canada. Since math is everywhere, we want to be too.

[MEDIA](#)



Michael Bennett: Diophantine equations for fun (and profit?)

Thu, Sept 21, 2017 - Louise and Richard K. Guy Lecture Series

(Lectures from PIMS events available at mathtube.org)

For more lectures and PIMS resources, please visit mathtube.org

PUBLICATIONS

PIMS Community Recent Publications:

1. Achter J., Altug S.A., and Gordon J., "[Elliptic curves, random matrices and orbital integrals](#)." *Pacific Journal of mathematics*, Vol 286, 2017
2. Achter J., and Howe E.W., "[Split abelian surfaces over finite fields and reductions of genus-2 curves](#)," *Algebra and Number Theory*, Vol. 11, 2017
3. Adem A., Gomez J., Lind J., and Tillman U., "[Infinite loop spaces and nilpotent K-theory](#)," *Algebraic and Geometric Topology*, Vol. 17, 2017

ABOUT PIMS

The Pacific Institute for the Mathematical Sciences (PIMS) was created in 1996 to promote **discovery, understanding and awareness** in the mathematical sciences. PIMS has expanded from the mathematics community of **Alberta and British Columbia** to include **Washington State, Saskatchewan and Manitoba**. We are proponents of mathematical **collaboration with industry, innovation in mathematics education** from K-12 to graduate level initiatives, **public outreach and partnerships** with similar organizations around the globe. We fund Collaborative Research Groups, Post-Doctoral Fellowships, individual events, and competitive prizes in mathematics.



Mailing address:

Pacific Institute for the Mathematical Sciences
The University of British Columbia
4176-2207 Main Mall
Vancouver, BC V6T 1Z4
Canada

[unsubscribe from this list](#) [update subscription preferences](#)