

2021 PIMS Equity, Diversity, and Inclusion Snapshot

About PIMS Equity, Diversity, and Inclusion (EDI) Committee

PIMS acknowledges that equity, diversity and inclusion strengthen the mathematical community by increasing the impact and relevance of research; widening the pool of qualified potential participants; and enhancing the integrity of the programs.

The programs and groups we support should promote and develop a rich research community, accessible to every member of the community. The purpose of the PIMS EDI Committee (EDIC) is to develop implementable, explicit strategies to monitor and improve equity, diversity and inclusivity of the Institute and its activities, and potentially impact the wider mathematical sciences community. We strive to support inclusivity at all stages from K-12 to retirement recognizing that potential gains made through support at one level can often be impacted by a weakness at another. We furthermore recognize that clear, successful policies are required by funding agencies. Within the mandate we consider the inequities faced by women, Indigenous Peoples, persons with disabilities, members of visible minorities, and diverse sexual orientation and gender identities.

PIMS EDI COMMITTEE MEMBERS

Prof. Laleh Behjat (UCalgary), Prof. Susan Cooper (UManitoba), Prof. Shawn Desaulniers (UAlberta), Prof. Chris Hoffman (UWashington), Prof. Greg Martin (UBC), Prof. Karen Meagher (URegina), Prof. Malabika Pramanik (UBC), Ruth Situma (PIMS), and Prof. Chris Soteris (USaskatchewan).

EDI Metrics

We make an effort to track and quantify ratios in the level-of-study and gender representation in our leadership and meetings. Data on participant level of study is broken down to Faculty, Postdoctorate, PhD, MSc and Undergraduate levels; gender is tracked in binary form: male or female. The data PIMS collects from our meetings and events is anonymous and voluntarily submitted. These are part of the reporting demographics required by our funding agencies

We have not tracked data based on other demographics of interest but acknowledge that more information on our participant backgrounds will allow us to create and fund activities that enable underrepresented and marginalized groups to be better included in our Mathematical Sciences community. This info sheet is a starting point for us to identify the gaps that need to be filled in our programs.

Meetings and Events

TOTAL PARTICIPANT NUMBERS 2020

In 2020, the total number of attendees was 4,072, 86% were from Canadian institutions. This total number is lower than in 2019 due to the cancellation or postponement of many conferences/workshops.

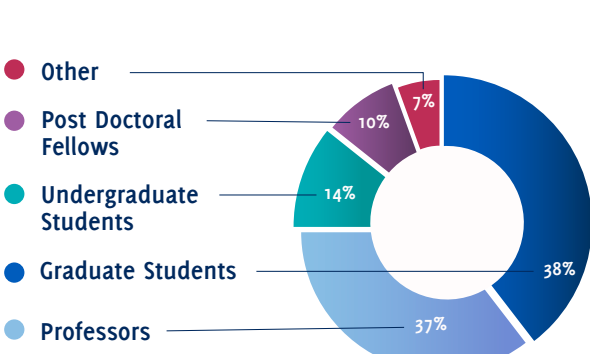
Location in Canada and Worldwide	
British Columbia	48%
Alberta	22%
Saskatchewan	14%
Manitoba	10%
Ontario & Quebec	5%
Atlantic Provinces	1%
North American institutions	6%
Elsewhere	8%



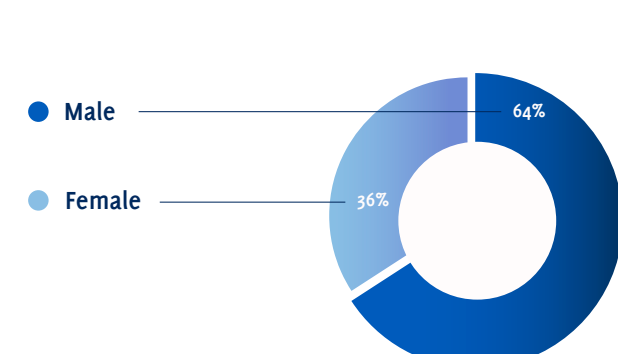
TOTAL NUMBER OF ACTIVITIES HOSTED

Activity	2020		2021	
	Activities	Users	Activities	Users
Conferences/Workshops	13	1,464	20	2,500
Summer Schools	1	25	4	100
Collaborative Research Groups	3		4	
Lecture-Seminar Series	30	1,479	30	1500
Industrial Activities	5	417	3	350
Syzygy		40,000		45,000
Callysto	26	26,000	10	17,300
Other	12	687	15	900

ACADEMIC ATTENDEE DEMOGRAPHICS



ATTENDEE GENDER DEMOGRAPHICS

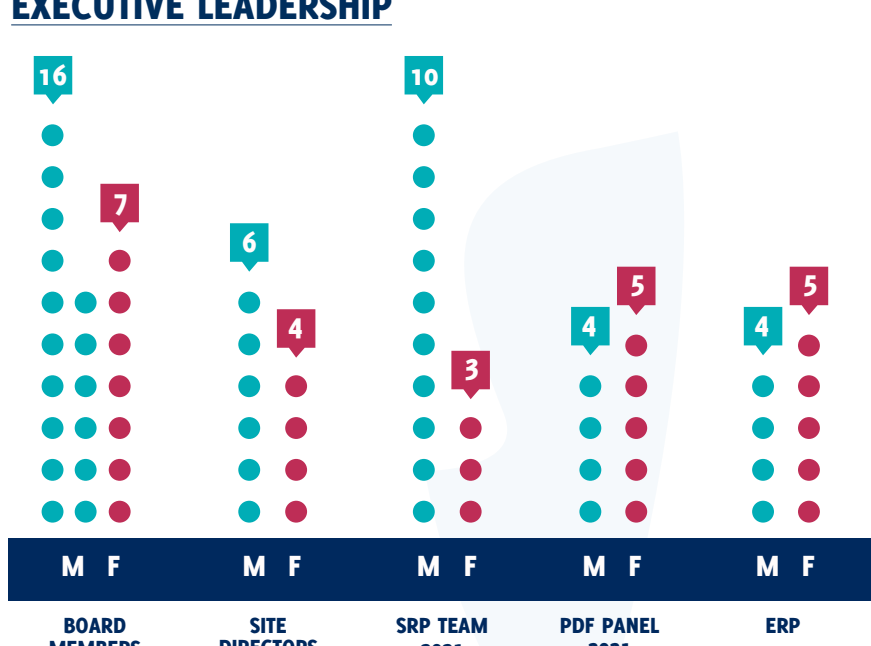


Executive and Research Leadership

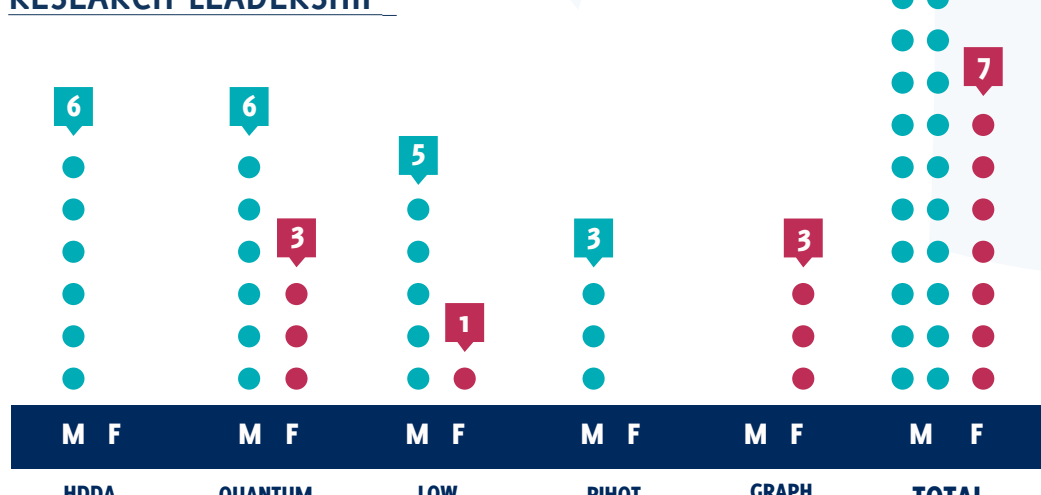
The PIMS administrative center is currently located at UBC, and is supported by scientific and administrative leaders across the network.

The executive leadership is composed of the PIMS Board of Directors, ten site directors, and includes members of the Scientific Review Panel (SRP), Postdoctoral Fellowship Panel (PDF) and Education Review Panel (ERP). Scientific leadership is identified through the current collaborative research groups (CRGs). There are currently five active CRGs in the 2020-2021 year.

EXECUTIVE LEADERSHIP



RESEARCH LEADERSHIP

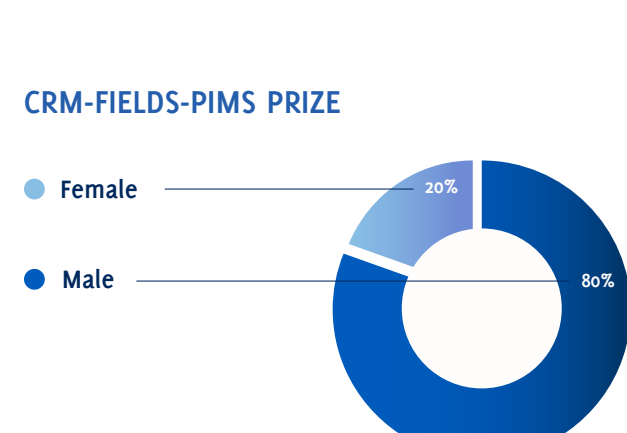


PIMS Prize Winners

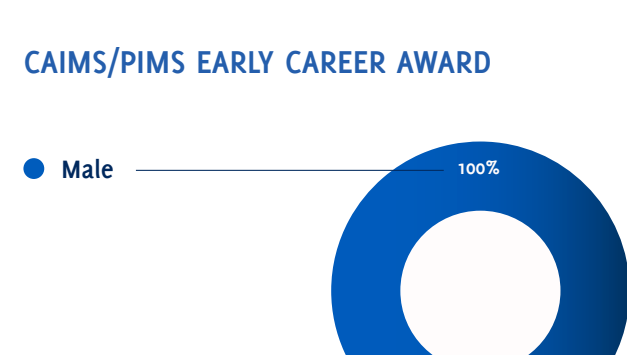
The figures show the results by recipient's gender for prizes awarded over the last 5 years.

The awards include: CRM-Fields-PIMS Prize, PIMS Education Prize, CAIMS/PIMS Early Career Award, and the UBC/PIMS Mathematical Sciences Young Faculty Award.

CRM-FIELDS-PIMS PRIZE



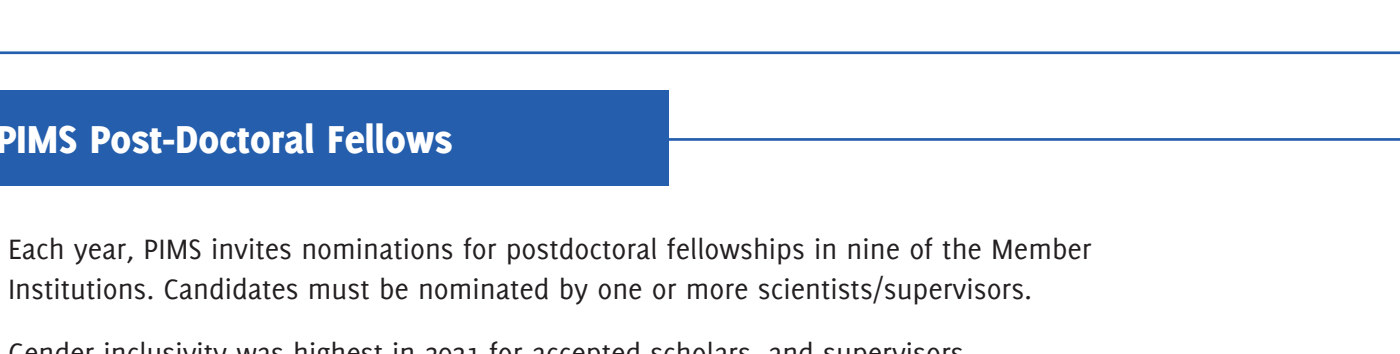
CAIMS/PIMS EARLY CAREER AWARD



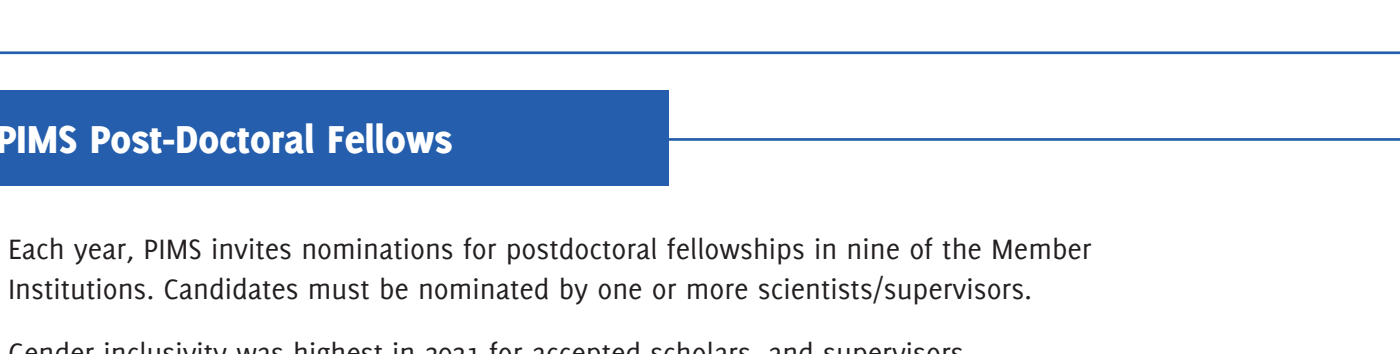
UBC/PIMS MATHEMATICAL SCIENCES YOUNG FACULTY AWARD



PIMS EDUCATION PRIZE



PRIZES OVERALL

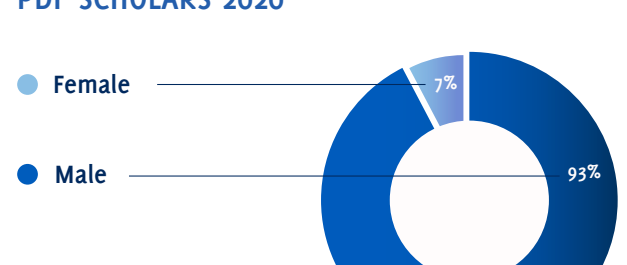


PIMS Post-Doctoral Fellows

Each year, PIMS invites nominations for postdoctoral fellowships in nine of the Member Institutions. Candidates must be nominated by one or more scientists/supervisors.

Gender inclusivity was highest in 2021 for accepted scholars, and supervisors.

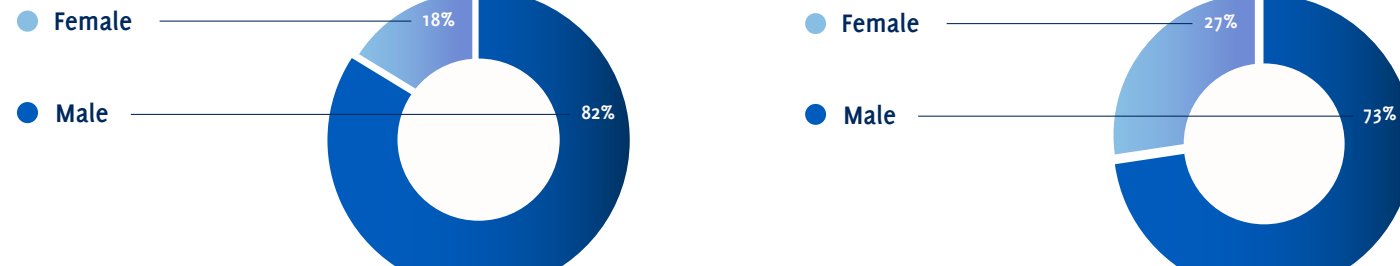
PDF SCHOLARS 2020



PDF SUPERVISORS 2020



PDF SCHOLARS 2021



PDF SUPERVISORS 2021

